

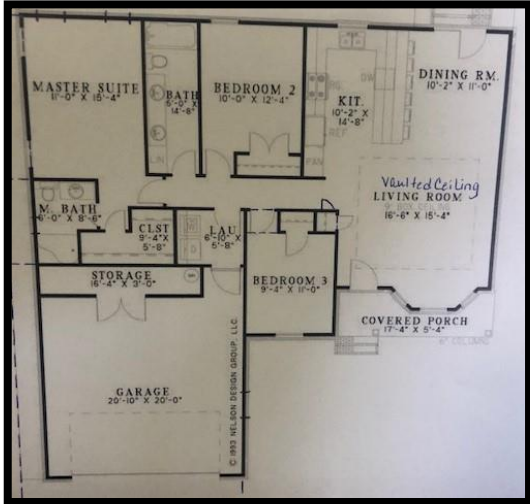
For Sale
\$289,900

Smoky Ridge Estates Patio Homes

2 Homes Currently Under Construction!



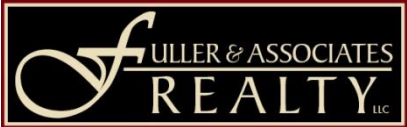
Cabinets & Granite
 North Home



Cabinets & Granite
 South Home

- Two Patio Homes Now Under Construction located on Crandall Creek Golf Course To be completed Winter 2020
- Handicap Accessible
 - Approx. 1375 sq. ft.
 - 3 Bedrooms/2 Bathrooms
 - Open Floorplan
 - Great Room w/Vaulted Ceilings
 - Custom Kitchen
 - Granite Countertops
 - Peninsula Snack Bar
 - Dining Area
 - Master Bedroom Suite with walk-in closet
 - Double vanity in both bathrooms
 - Wider Doorways & Hallways
 - Ramp from Garage into laundry
 - Pre-finished Smartside Siding
 - 30-year Shingles
 - Patio off the kitchen with golf course views
 - Oversized 2-car attached garage with storage area and crawl-space access

Smoky Ridge Estates HOA allows for optional lawn care and snow removal for maintenance free living! Covenants available upon request! Patio homes have shared well, private septic systems!



Fuller & Associates Realty, LLC
 Call Linda Fuller for Details
 (308) 289-0974 Cell
 (308) 284-2100 Office
www.fullerrealty.net

125 Smoky Ridge Road Floorplan (South)
 127 Smoky Ridge Road will be reversed (North)

**Some modifications to the floorplan have been done—ask for details